

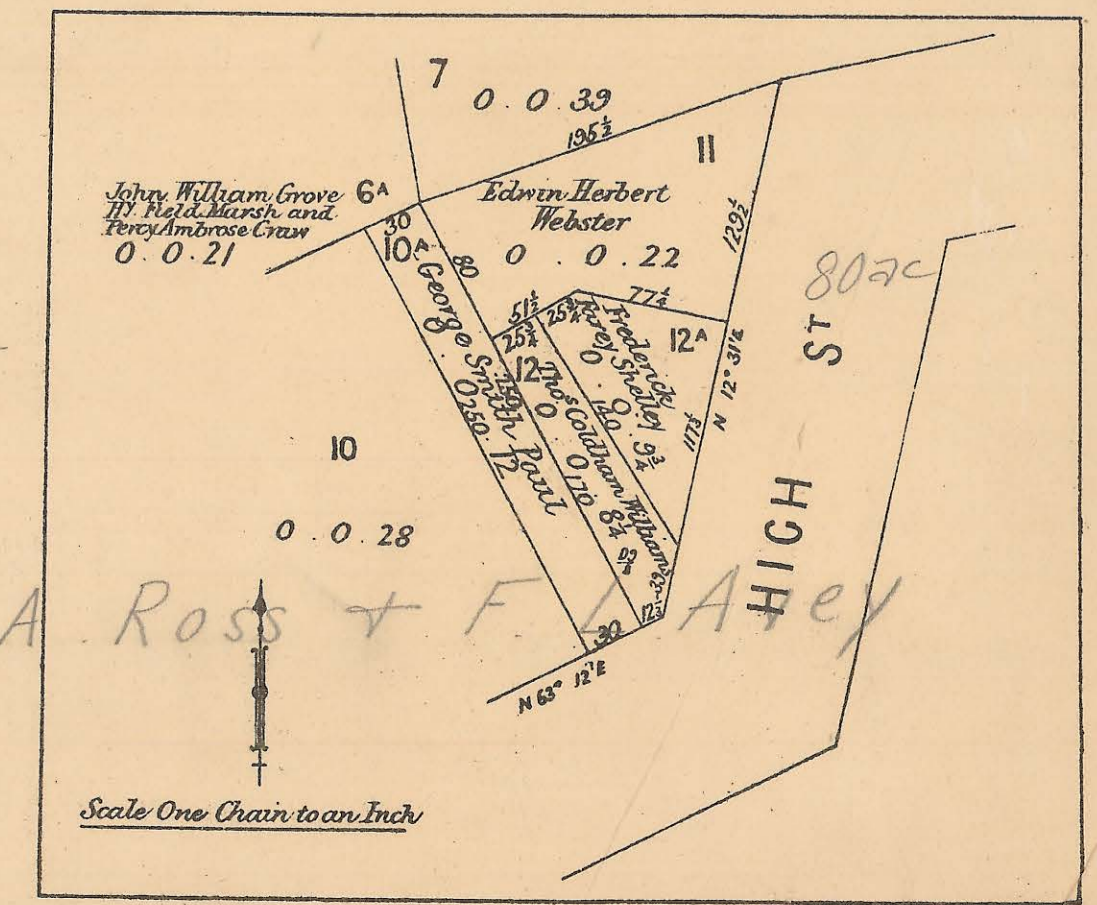
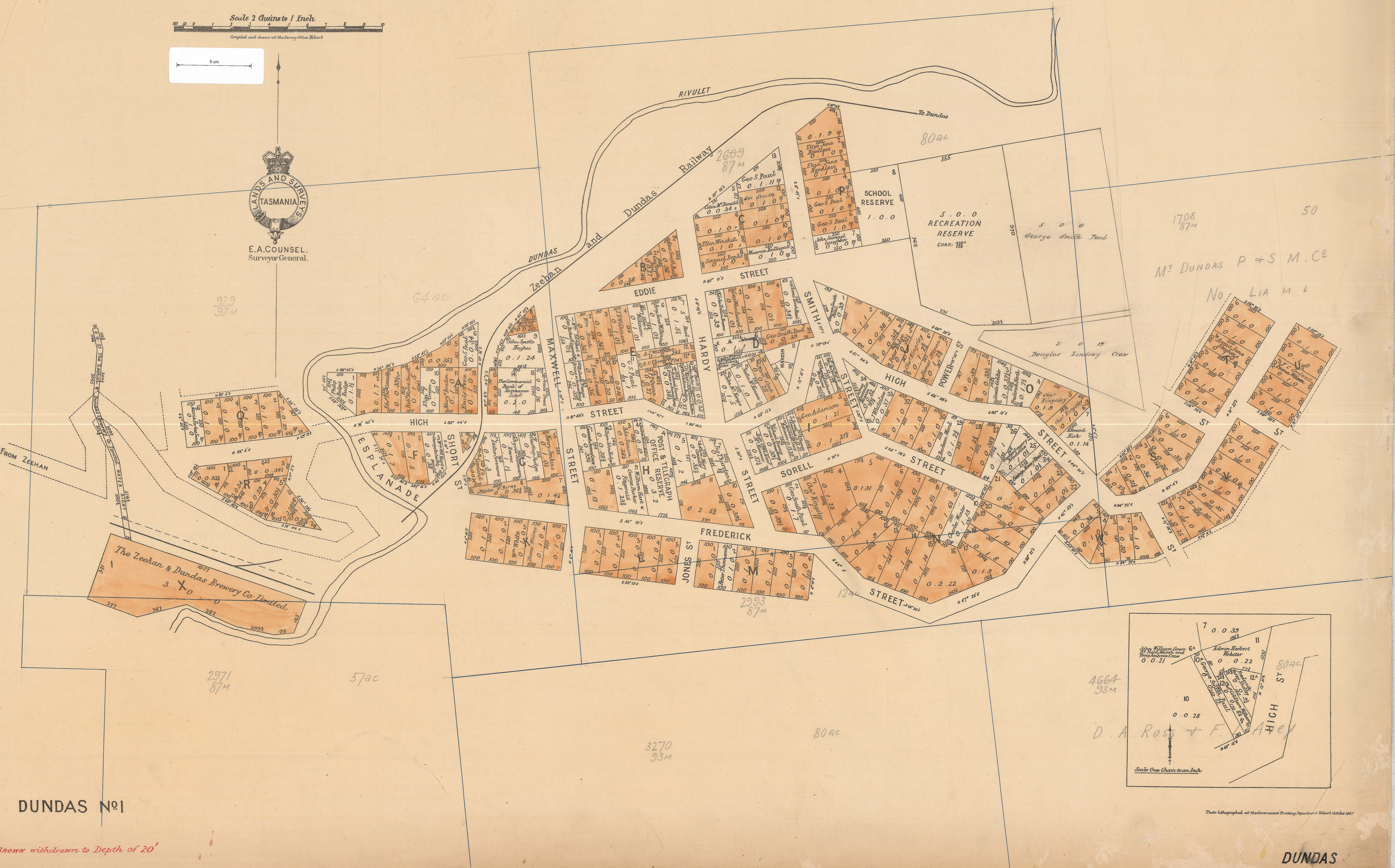
DUNDAS

Scale 2 Chains to 1 Inch
Compiled and drawn at the Survey Office, Hobart

5 cm



E.A. COUNSEL,
Surveyor General.



DUNDAS No 1

Red Brown with drawn to depth of 20'

DUNDAS

This is a photograph of the Government Printing Department, Hobart, October 1917