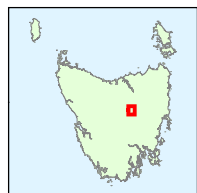
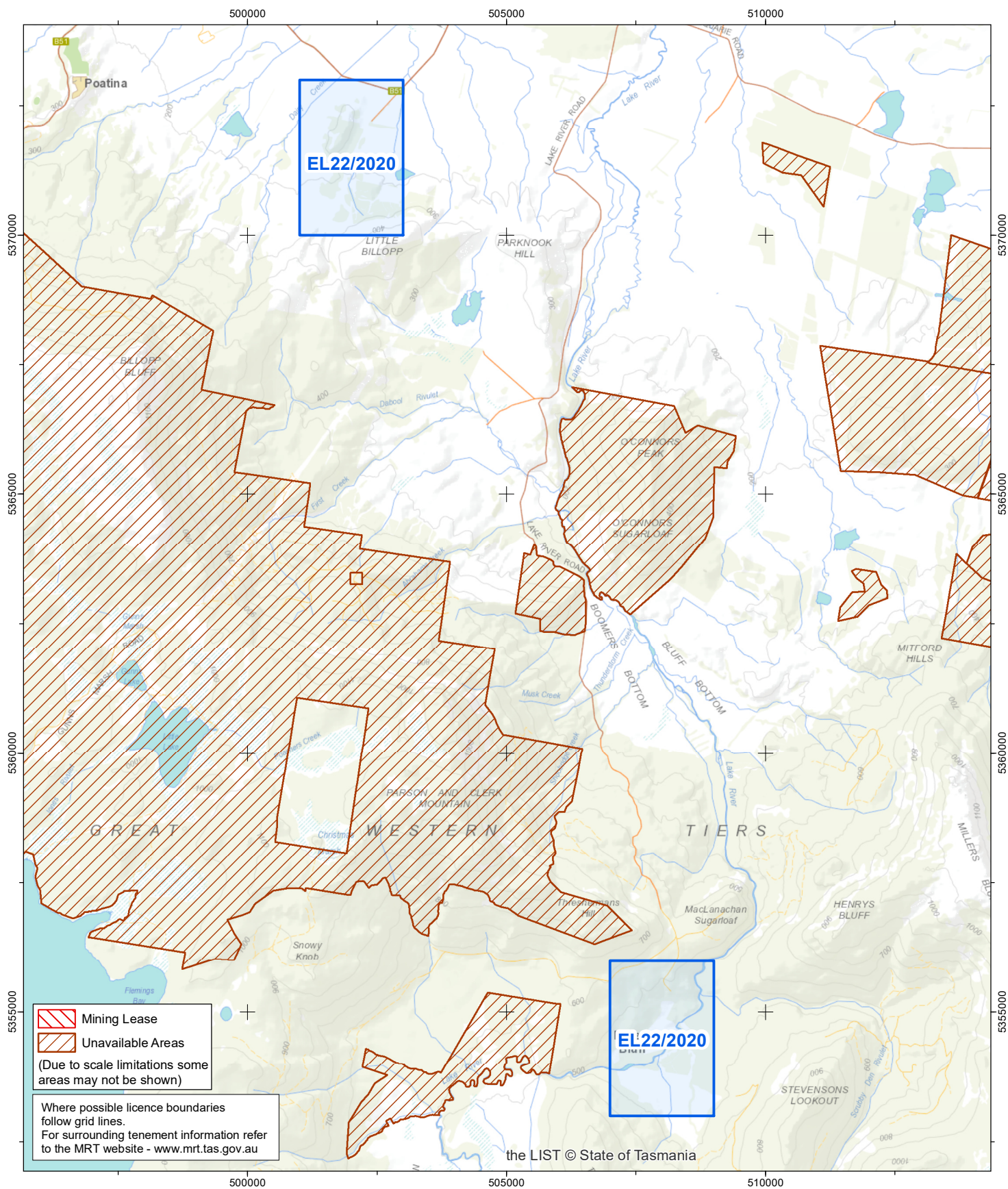


# Department of State Growth

## MINERAL RESOURCES TASMANIA



**EL22/2020 12km<sup>2</sup>**  
**Vicinity of Lake River**

0 1 2 3 4 5 km

**1:100,000**

Coordinate Datum - GDA94 MGA Zone 55



Base image by TASMAT  
([www.tasmap.tas.gov.au](http://www.tasmap.tas.gov.au))  
© State of Tasmania